



$\mu\text{mol}/\text{m}^2/\text{sec}$

WATER PROOF
PAR METER
APM15w

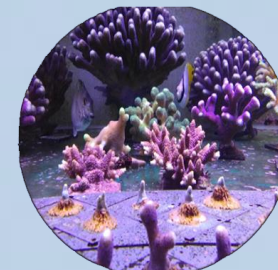
The waterproof APM15w PAR Meter is mainly used for agriculture, horticulture, aquarium, reef tank and other research and production departments for PAR radiation measurement. It is designed to measure PAR (Photosynthetically Active Radiation) flux in wavelengths ranging from 400 to 700 nanometer for both sunlight and electric light. Its characteristics are the spectral response simulation probe photosynthetic function effectively, digital show, portable compact, with good accuracy and stability. In controlled environment agriculture (CEA) and reef tank, it is ideal for growers and aquarium enthusiasts to measure light to avoid the risk of wasting energy or damaging their plants.

Features at a Glance

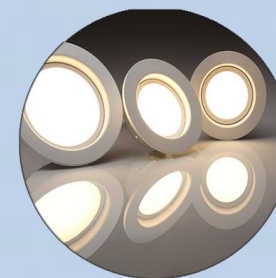
- Full-spectrum underwater quantum meter for accurately measuring the (PAR) underwater
- For measuring the intensity of light used in the precision growing of plants and aquariums
- Precisely measures and combines the intensity of all photons between 400 and 700 nm
- Laboratory-grade PPFD for precisely calibrate
- Display Resolution 0.1 $\mu\text{mol}/\text{m}^2/\text{sec}$ (0-999); 1 $\mu\text{mol}/\text{m}^2/\text{sec}$ (1000-4000)
- Has a stable, accurate calibration with an accuracy drift rate of less than 2% per year
- Measurement Range 0-4000 $\mu\text{mol}/\text{m}^2/\text{sec}$
- Memory Record 100 Data log



Aquarium Fish



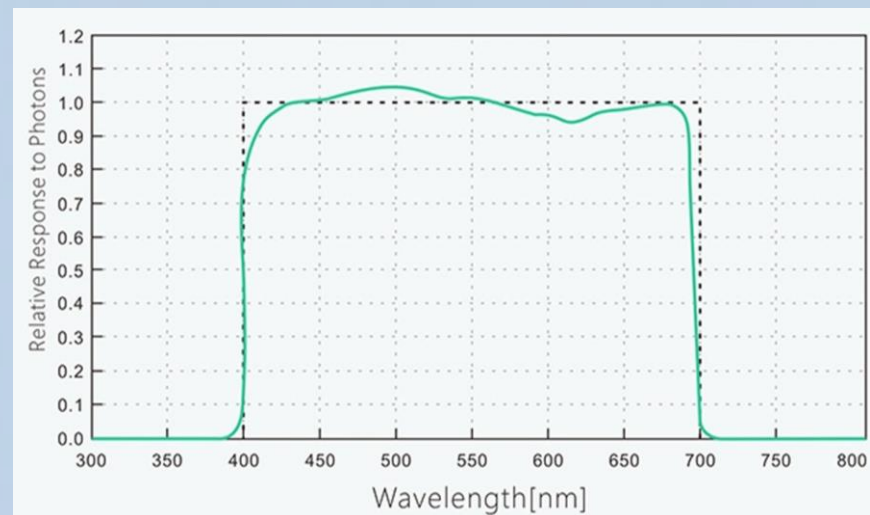
Coral Study



Lamp Factory



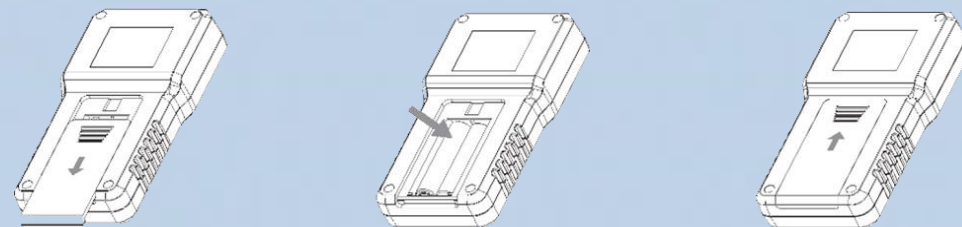
Agriculture





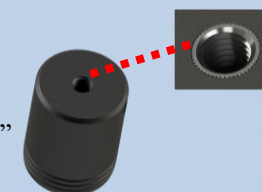
Method Of Application

Initial Setup



1. Open the battery cover 2. Insert two AAA batteries into the battery compartment. 3. Close the battery cover

Sensor unit includes 1/4" screw mount for tripod and selfie stick compatibility"



Measurement	Specification
Operating Temperature	32°F to 122°F (0°C to 50°C)
Storage Temperature	-4°F to 140°F (-20°C to 60°C)
Operating & Storage RH	0-95%, non-condensing

PPFD Measurement	
Repeatability	+/-1 $\mu\text{mol}/\text{m}^2/\text{sec}$
Measurement Range	0-4000 $\mu\text{mol}/\text{m}^2/\text{sec}$
Water Proof Level	IP68
Display Resolution	0.1 $\mu\text{mol}/\text{m}^2/\text{sec}$ (0-999); 1 $\mu\text{mol}/\text{m}^2/\text{sec}$ (1000-4000)
Cut-On Wavelength	400+/-10nm
Cut-Off Wavelength	700+/-10nm
Power Requirements	2 x AAA batteries
Dimension	Main Unit: 115 x 60 x 24mm Sensor Unit: 80 x 45.6 x 26mm
Weight	115g (without batteries and cable)

Troubleshooting	Cause	Remedy
Symptom	Power is not turned on	Turn on the power button
	Battery is empty	Replace battery
	Cable error	Please check the cable, maybe there is some electrical short

LCD main display show"-----"	Sensor unit is not working	Please check the cable and redo connect.
	Cable connect error	Please check the cable and redo connect.
	Some foreign body in RJ11 port	Please check RJ11 port, maybe there is some foreign body in RJ11 port.
LCD no display, only battery icon flash	Battery is empty	Replace battery

KunShan AST Optoelectronics Co.,Ltd

No.285 North YuDai road, KunShan city, China. TEL: 0512-57319796

www.AstOptoe.com. Email: JennyPan@astopto.com